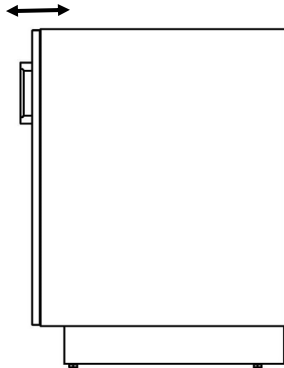


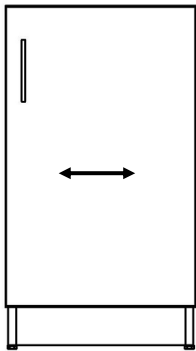
FORGE HINGE ADJUSTMENT

Adjustment Instructions

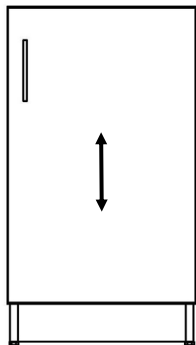
To Adjust Doors In and Out use Screw A in (Figure A).



To Adjust Doors Side to Side use Screw B in (Figure A).



To Adjust Doors Up and Down use Screw C in (Figure A).



To Adjust the Soft Close Engagement, Toggle Switch A in (Figure A).

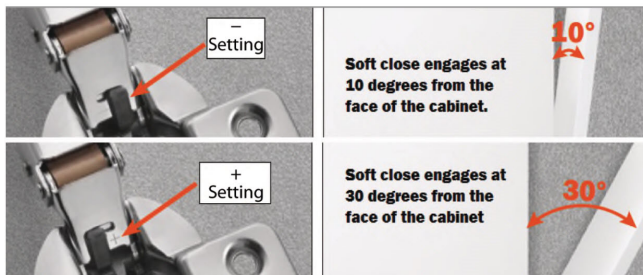


Figure A

